



FLIGHTLINE GRAPHICS

Paint Masks - Stencils - Dry Rub Decals - Waterslides

Telephone: +44(0)7872 181119 (mobile)

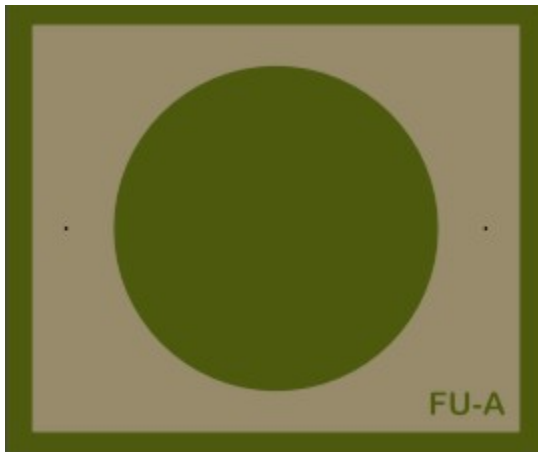
Website: <http://www.flightlinegraphics.com>

email: sales@flightlinegraphics.com

Royal Canadian Air Force Roundel: White First Supplementary notes.

Painting the RCAF roundel requires blue, white, and red to be applied to a variety of different coloured surfaces. It is preferable to follow good practice and paint lighter colours first before progressing to darker shades. This supplementary sheet gives guidance on how to paint roundels that have dark outer and inner colours with light middle circles using the minimum of paint.

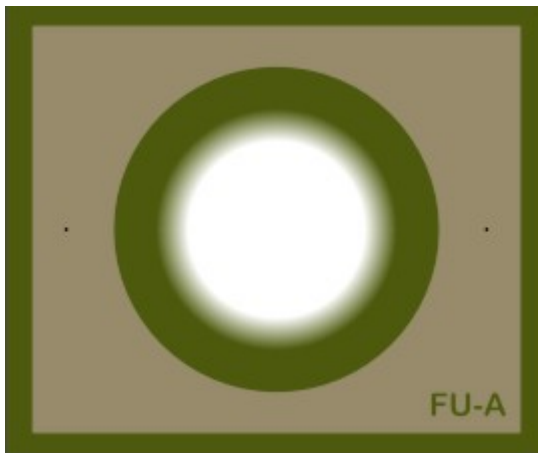
Read these instructions in conjunction with the basic instructions available online – [click here](#).



As the title for the procedure suggests the white colour is sprayed first.

Position the "A" mask on the model following the normal procedures ensuring the 2 registration marks are located with dots or pins (see instructions: Paint Masks – The Basics)

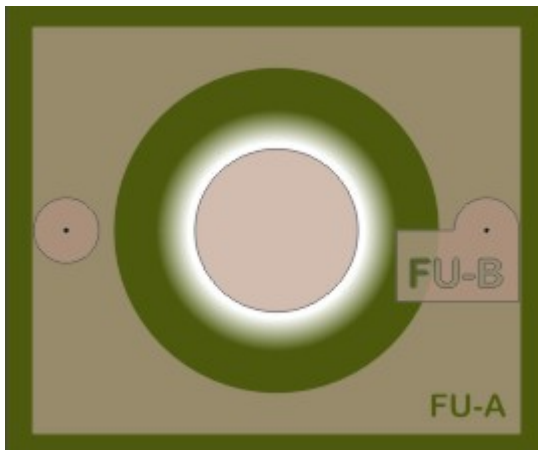
The "A" mask will not be removed until after the blue colour has been applied!!



Apply white paint to the centre of the mask to a diameter slightly large than the disk of the "B" mask.

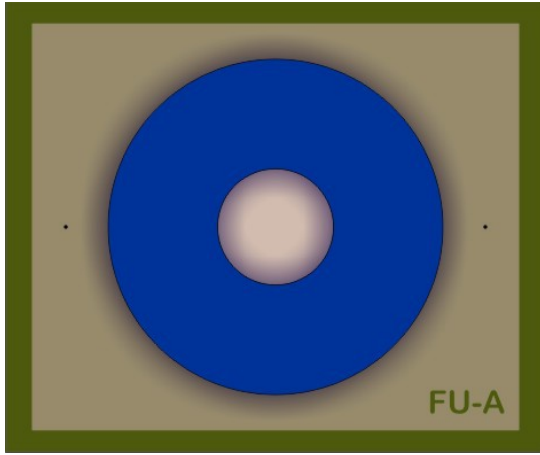
Take care not to over apply white on the outer edges as this could cause a white "tide mark" to the outer edge of the blue circle!

DO NOT REMOVE THE "A" MASK!



When the white paint has dried sufficiently apply the "B" mask using the registration disks for guidance.

Remove the "B" mask Registration Disks before painting.



Apply the blue colour to exposed areas.

When the blue paint has dried sufficiently the all of the "A" & "B" masks can be removed.



Apply the "C" mask using the registration marks for guidance and prepare to apply the red colour of the Maple Leaf.

When the paint has dried sufficiently you can remove the mask and registration pins/dots whichever have been used.



And there you have the RCAF roundel applied with the minimum of paint.

Remember there are similar designs for this roundel but the procedure remains the same.

Support : support@flightlinegraphics.com

Thank you.

Nigel Wagstaff
<http://www.flightlinegraphics.com/>