



FLIGHTLINE GRAPHICS

Paint Masks - Stencils - Dry Rub Decals - Waterslides

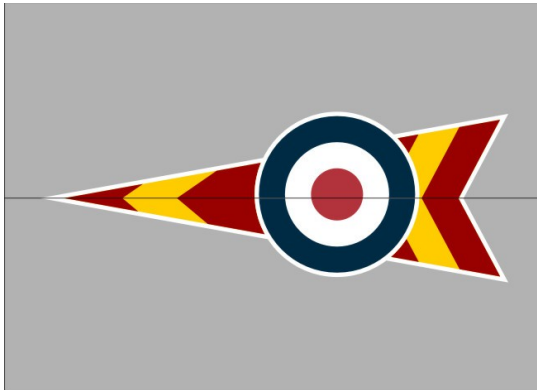
Telephone: +44(0)7872 181119 (mobile)

Website: <http://www.flightlinegraphics.com>

email: sales@flightlinegraphics.com

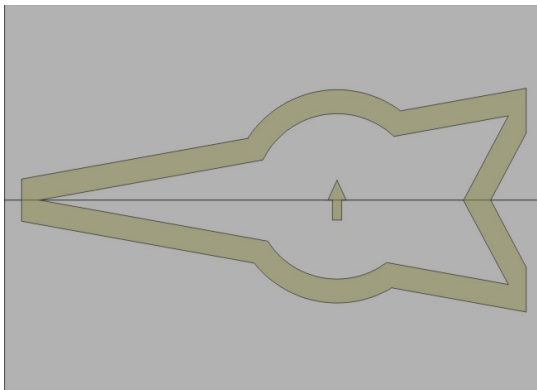
RAF D roundel with surrounding chevron flash.

Painting the RAF's D roundel incorporating a bordering chevron flash takes a little extra effort to achieve good results. However, these instructions should help make the application process straight forward. The advantage to this design is the entire outline is white and all other colours are inset with a clear border. This supplementary instruction sheet gives guidance on how to paint this insignia using a minimum of paint starting with the white colour. Please read this supplementary instruction sheet in conjunction with the basic instructions – [click here](#).



Because of the size of the insignia you need to take some deciding where they are to be located.

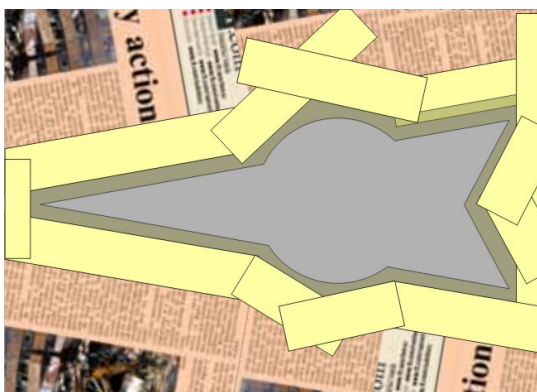
It is perhaps best to draw a set of horizontal lines on the fuselage sides and align the point and tail of the insignia over the line.



In the image opposite you can see how the first mask for the white background looks immediately after application.

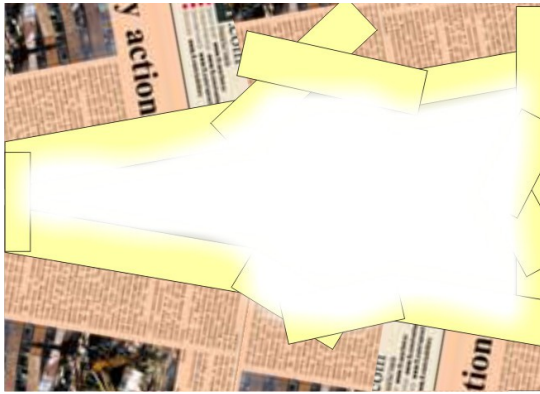
The orientation (up) arrow helps you install the marking on the correct side as they are handed for the port and starboard.

Once the mask is applied and the application film removed the orientation arrow should be removed.



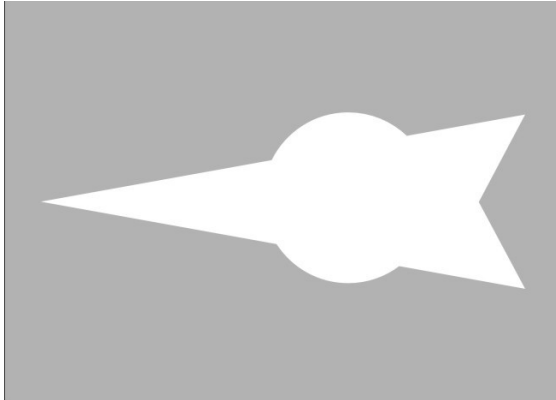
Seal the mask down as described in the basic instructions.

Before painting ensure that the area around the mask is protected from overspray.



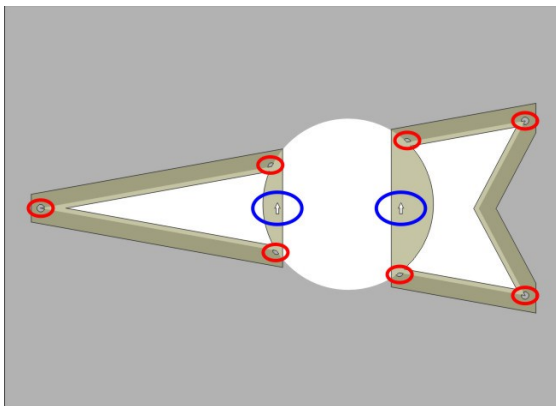
Apply the White colour ensuring minimal but even coverage. Spray multiple, light coats of paint rather than flooding the paint on.

Allow the paint to dry sufficiently before removing all masking materials, including the "A" mask.



You must be sure the paint has dried sufficiently to take more handling (see manufacturers instructions)

You can prepare to add the next mask for the Insignia Yellow.

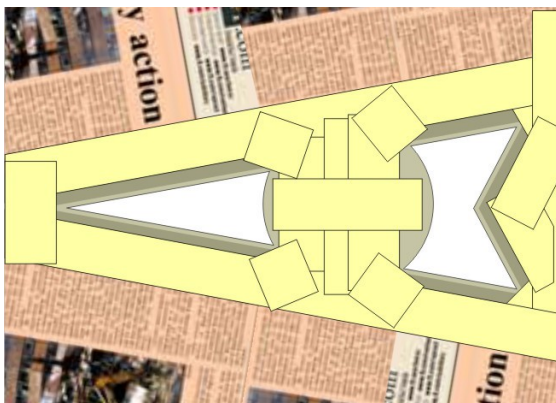


The Insignia Yellow is applied with the "B" mask and is supplied in 2 parts.

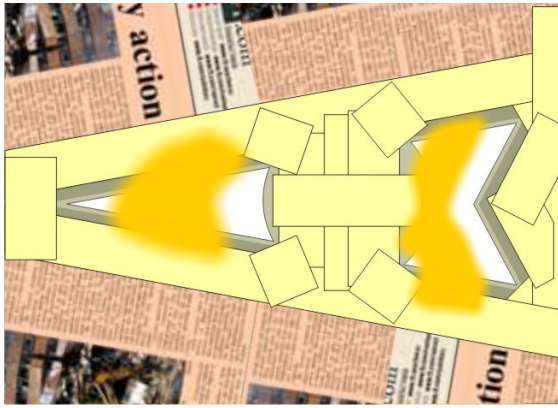
Apply the mask using the registration marks circled in red. The marks are cut to match the corner points of the white previously applied.

Also be sure the alignment arrows (circled in blue) is in the same orientation.

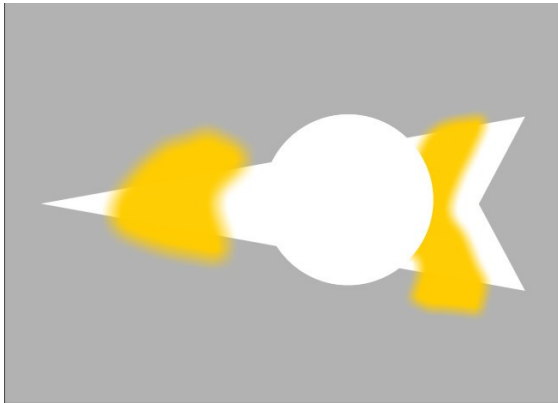
Apply the masks with minimum pressure initially so the masks can be easily lifted and re-positioned if necessary.



Mask up being careful to protect all the exposed areas including the alignment marks, stencil label, and the orientation arrows.



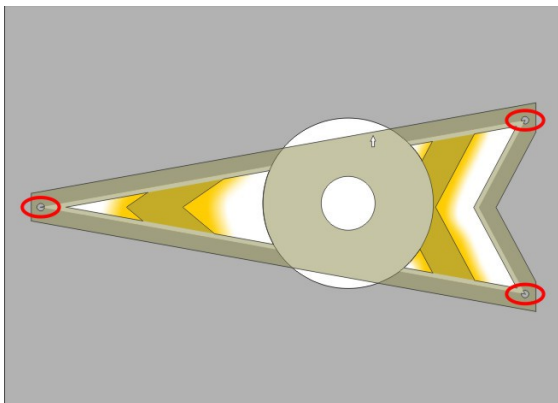
The Yellow paint does not want to fill the entire area exposed. If you look at the "D" mask for the red colour you will see where the yellow needs to go so use it as a template and possibly mark some points on the "C" mask before you start painting. The more yellow edges that need to be over sprayed with the red the harder the "D" mask alignment will be. You are strongly recommended to use a small model airbrush for this colour to improve accuracy and to reduce over spray. Use multiple, light coats building the colour slowly.



Allow the paint to dry sufficiently before removing all masking materials, including the "B" masks.

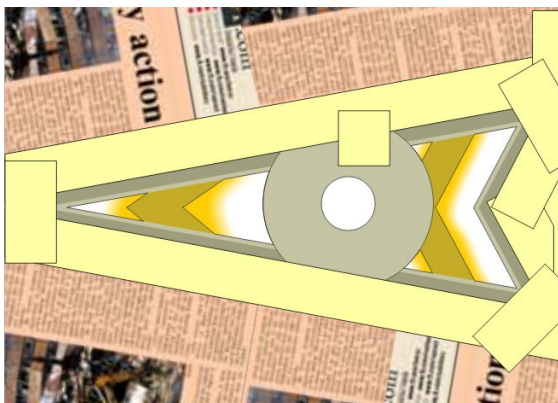
You must be sure the paint has dried sufficiently to take more handling (see manufacturers instructions).

You can prepare to add the next mask for the Insignia Red.

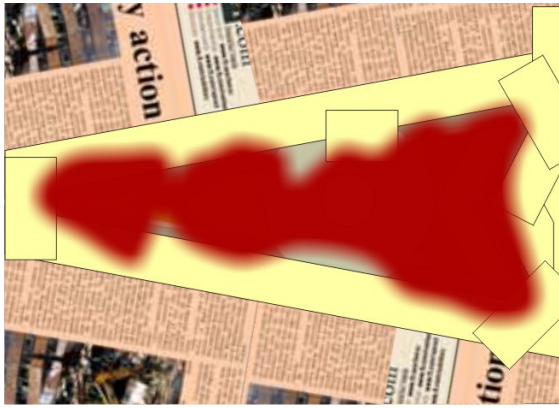


It's now time to apply the "C" mask. Again the mask uses the points of the white outline to position the mask.

As usual take your time as the mask can be rather large on bigger models. Pay particular attention to the edges that are currently yellow and will eventually be sprayed red. This mask applies the red chevrons and the red circle at the centre of D roundel.

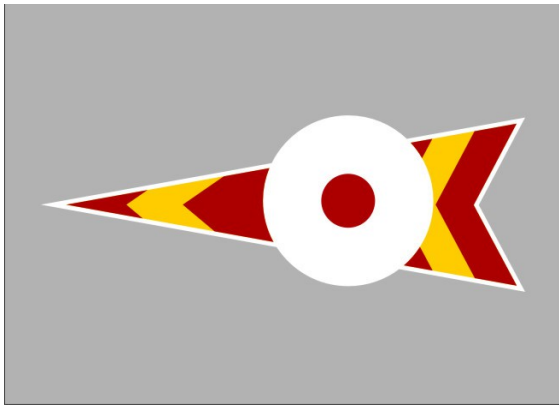


Mask up being careful to protect all the exposed areas including the alignment marks, stencil label, and the orientation arrow.



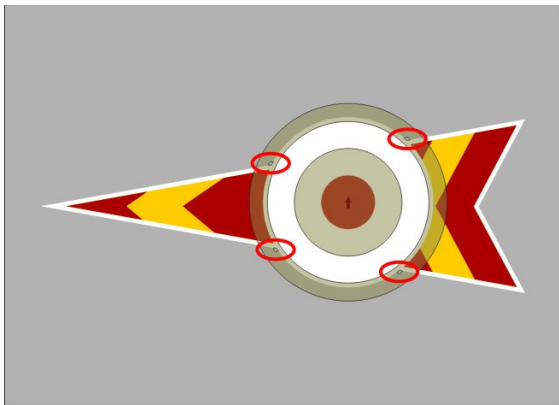
Apply the Insignia Red colour ensuring minimal but even coverage. Spray multiple, light coats of paint rather than flooding the paint on.

Allow the paint to dry sufficiently before removing all masking materials, including the "C" masks.



You must be sure the paint has dried sufficiently to take more handling (see manufacturers instructions)

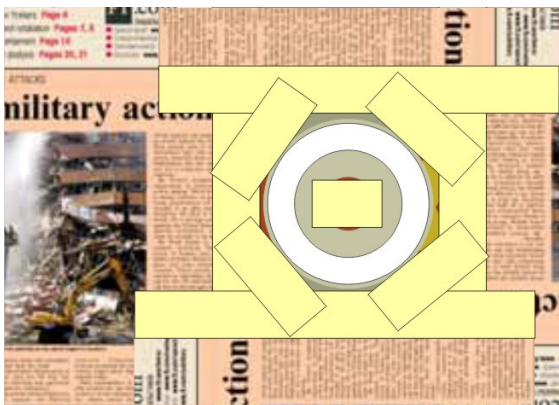
You can prepare to add the final "D" mask next for the Insignia Blue.



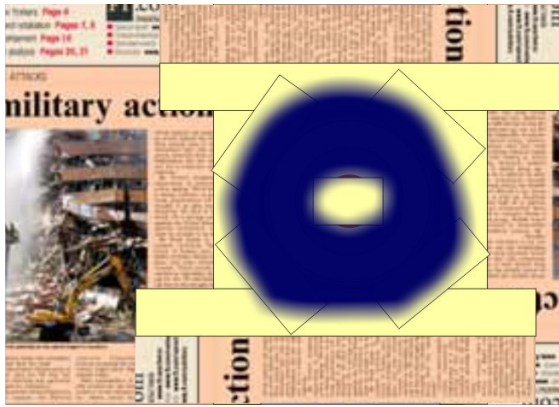
Apply Mask "D" using the registration marks circled in red. The marks are cut to match the 4 corners of the white circle so take your time to ensure correct orientation and alignment.

Also be sure the alignment arrow in the centre of the mask is in the same orientation as previous masks.

Apply the mask with minimum pressure initially so the masks can be easily lifted and re-positioned if necessary.

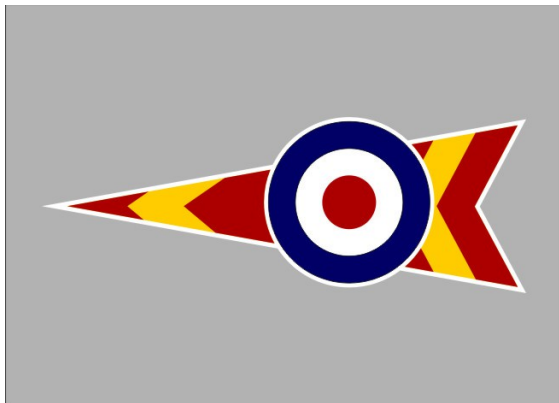


Mask up being careful to protect all the exposed areas including the alignment marks, stencil label, and the orientation arrow.



Apply the Insignia Blue colour ensuring minimal but even coverage. Spray multiple, light coats of paint rather than flooding the paint on.

Allow the paint to dry sufficiently before removing all masking materials to reveal the finished insignia.



And there you have it. The insignia is complete.

If there are any questions before you use the masks please do not hesitate to contact me.

Support : support@flightlinegraphics.com

Thank you.

Nigel Wagstaff
Flightline Graphics.